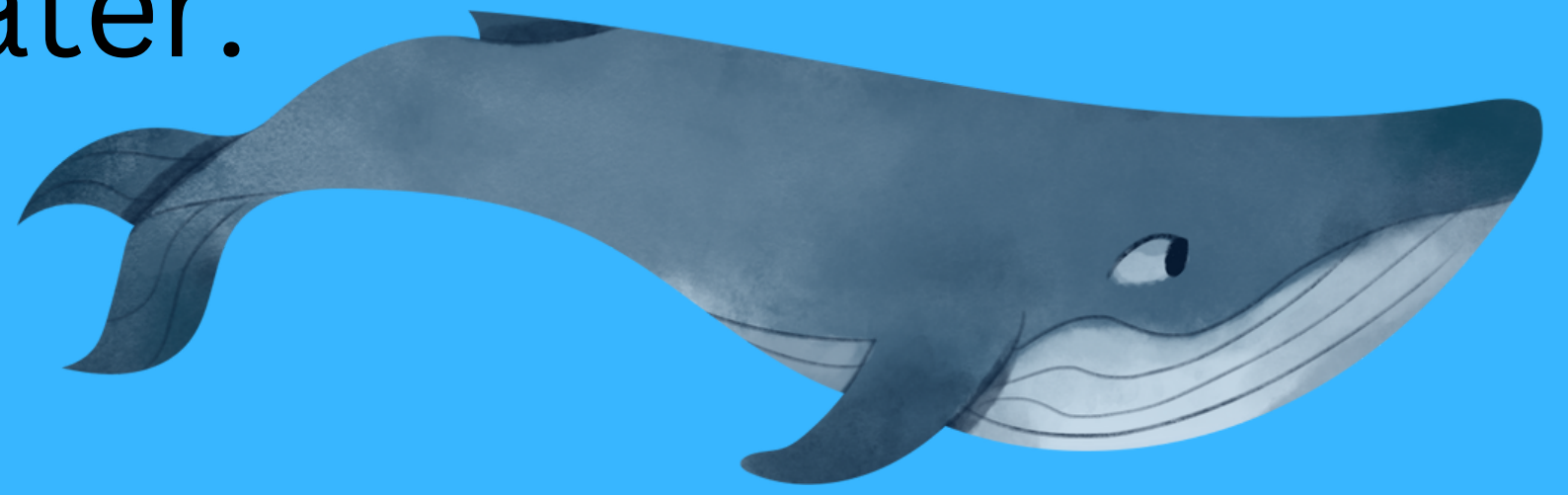
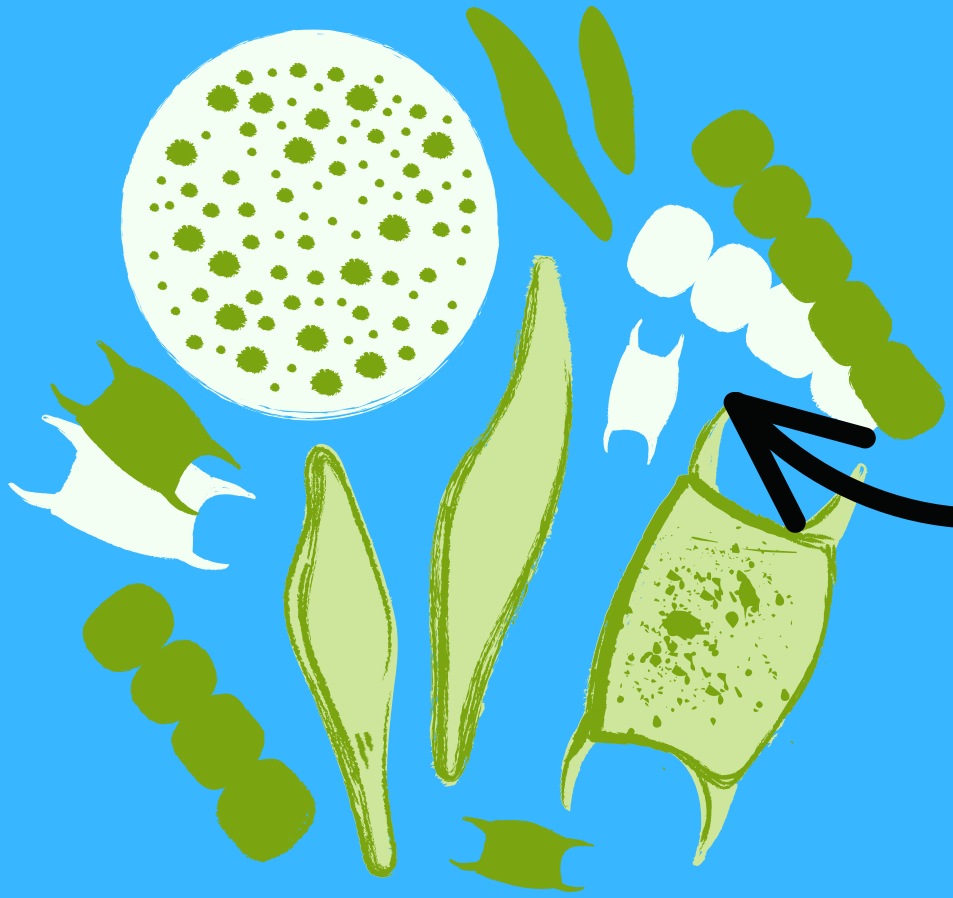


Pollutants include chemicals, trash, bacteria, and parasites. All forms of pollution eventually make their way to water.



Whale poop is rich in iron and nitrogen, both key minerals for phytoplankton growth. So more whales, means more poop, meaning more nutrients for the phytoplankton, which means more oxygen, more carbon storage and more food for the entire food chain.

Scientists estimate that roughly half of the oxygen production on Earth comes from the ocean. The majority of this production is from oceanic plankton



One of the reasons why whales die is because they think that plastic bags are jellyfish (food).





The vast majority of the fires in the Amazon and Indonesia are manmade and intentional—the result of illegal deforestation and clearing for farmland. Wildfires are in fact quite rare in tropical rainforests, due to the high humidity. These fires, however, are often deliberately set as part of slash-and-burn agriculture — a method of growing food in which farmers and cattle ranchers deliberately cut down and burn forestland to clear it for crops and livestock.



Growing the same crop year after year reduces the availability of certain nutrients and degrades the soil. Monocultures may therefore also lead to soil exhaustion when the soil becomes depleted of these nutrients.

In the last few decades, soil degradation has been sped up by intensive farming practices like deforestation, overgrazing, intensive cultivation, forest fires and construction work. These actions disturb soil and leave it vulnerable to wind and water erosion, which damages the complex systems underneath.

4 sources of air pollution



Mobile sources – such as cars, buses, planes, trucks, and trains. Stationary sources – such as power plants, oil refineries, industrial facilities, and factories.

Area sources – such as agricultural areas, cities, and wood burning fireplaces.

Natural sources – such as wind-blown dust, wildfires, and volcanoes.





**YOUR ROLE IS TO
KEEP THE TEAM
FOCUSED THROUGH
THE GAME**





**YOUR ROLE IS TO
HOLD THE 4
ELEMENTS AS YOUR
TEAM FIND THEM**





**YOUR ROLE IS TO
KEEP THE TEAM
TOGETHER WHILE
PLAYING THE GAME**





**YOUR ROLE IS TO READ
OUT LOUD FOR YOUR
TEAM ALL THE HINTS
YOU FIND DURING THE
GAME**





YOUR ROLE IS TO PICK UP TRASH YOUR TEAM FINDS DURING THE GAME*

***THE EQUIPMENT WILL BE GIVEN NEXT TO ONE OF
THE ELEMENTS YOUR TEAM IS GOING TO FIND**





**YOUR ROLE IS TO PROTECT
THE SEED YOUR TEEM WILL
FIND DURING THE GAME
UNTIL YOU REACH THE END**





YOUR ROLE IS TO CALL THIS NUMBER IF YOU GET STUCK

+CGA BFCCHFGH

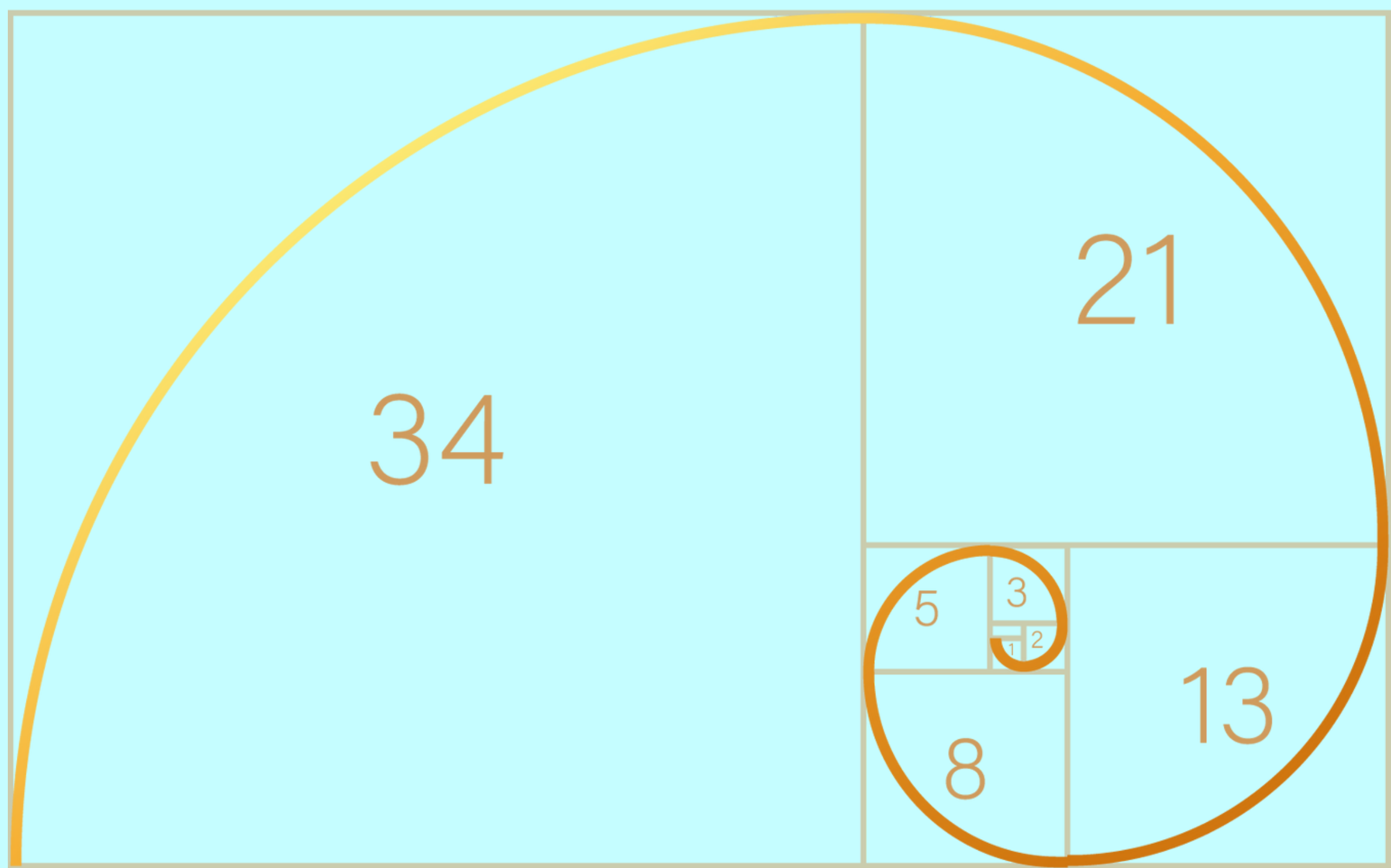
The modern English alphabet
with 26 letters started in the
16th century.



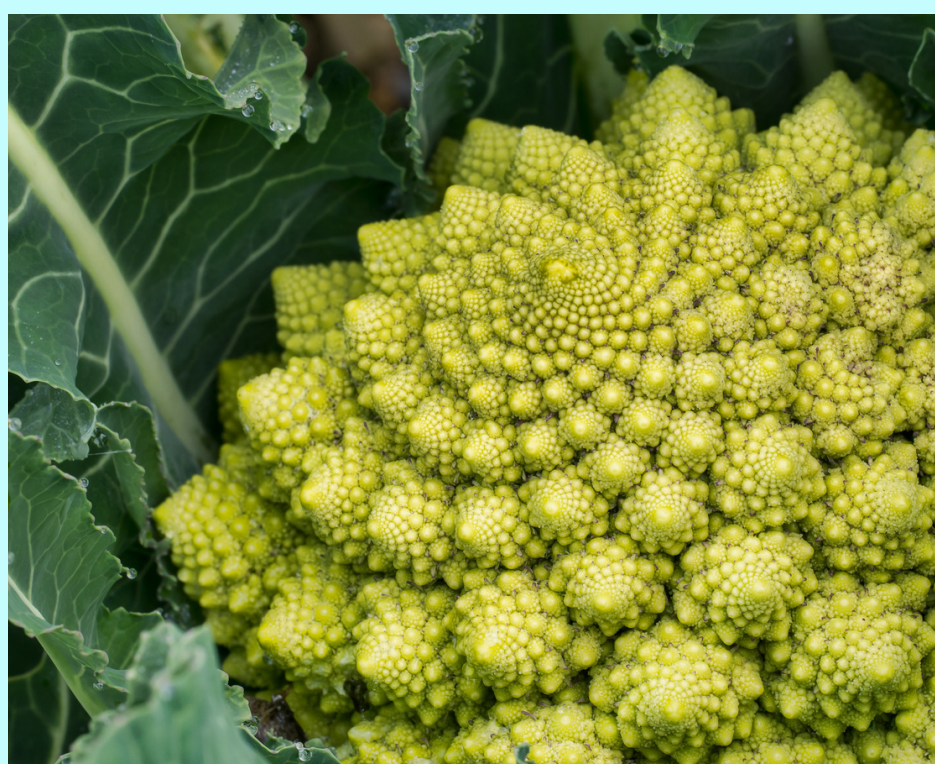


**YOUR ROLE IS TO HELP
ANYONE WHO NEEDS IT
DURING THE GAME**





Phyllotaxis spirals can be generated from Fibonacci ratios: the Fibonacci sequence runs 1, 1, 2, 3, 5, 8, 13... (each subsequent number being the sum of the two preceding ones).

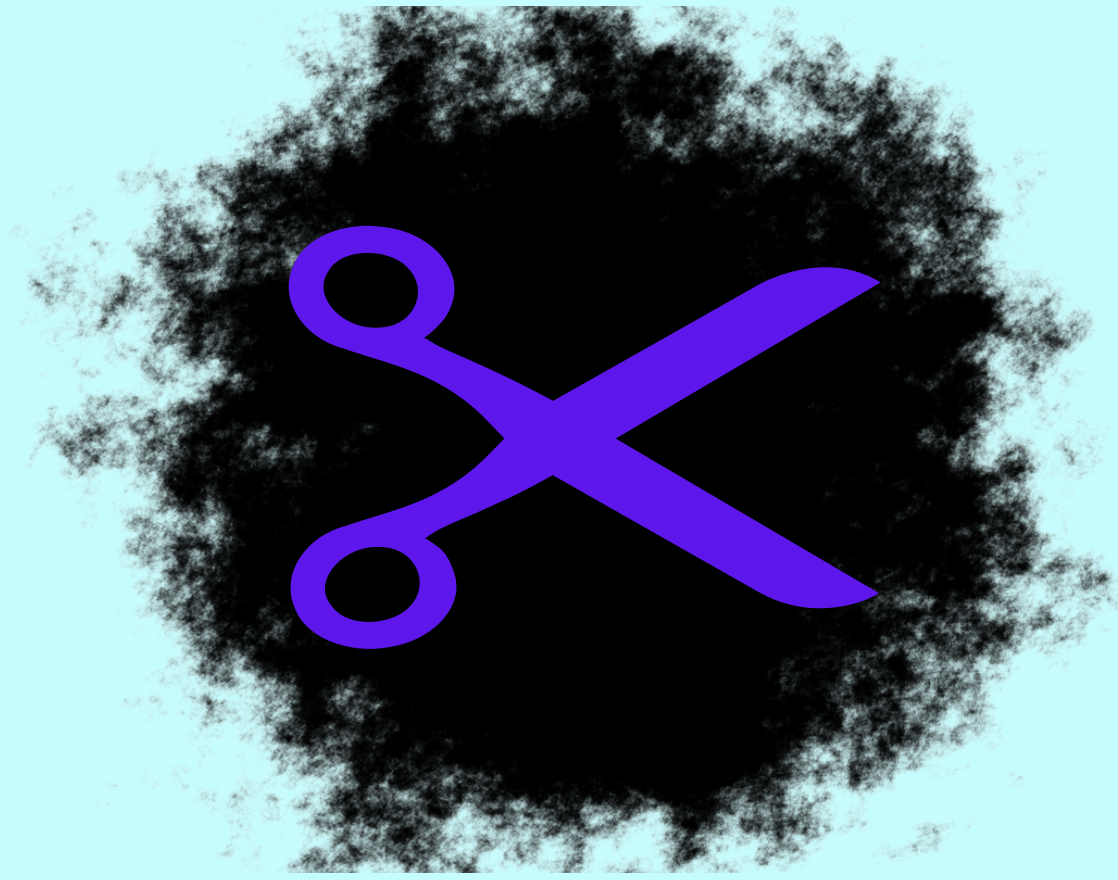




**Find charcoal in
the place of fire
element and
color the papers
you found in the
soil element box.**

0000000
0111110
0100000
0000000
0111110
0000000
0000000
0111110

00000000							
10101110							
10100010							
10100010							
10100010							
10100010							
00000000							



Ups... looks like
wind is blowing
west! It has carried
the air element
somewhere else....

